

Cohort, Exam 2**Ultrasound Data**

Observed Measurements in file UBME4

Original Derived Variables (See diagram for graphic illustration)

1. mx23: maximum near wall thickness is the maximum of all available (up to eleven) distances between pairs of points on the near wall, using splined data when five or more points were actually read in an interface, or using only observed data when four or less points were read.

There is a *mx23 for every site, where A*≡ is one of the prefixes listed in Appendix A, corresponding to the specific site.

lanbmx23	lbibmx23	linbmx23	lopbmx23	lpobmx23	qclbmx23
ranbmx23	rbibmx2 3	rinbmx23	ropbmx23	rpobmx23	qc2bmx23

2. mx45: is similarly defined, for the far wall

There is a *mx45 for every site, where A*≡ is one of the prefixes listed in Appendix A, corresponding to the specific site.

lanbmx45	lbibmx45	linbmx45	lopbmx45	lpobmx45	qc1bmx45
ranbmx45	rbibmx45	rinbmx45	ropbmx45	rpobmx45	qc2bmx45

3. av45: mean far wall thickness, is the arithmetic mean of all available (up to eleven) distances between pairs of points on the far wall, using splined data when five or more points were actually read in an interface, or using only observed data when four or less points were read.

There is a *av45 for every site, where A*≡ is one of prefixes listed in Appendix A, corresponding to the specific site.

lanbav45	lbibav45	linbav45	lopav45	lpobav45	qc1bav45
ranbav45	rbiabv45	rinbav45	ropav45	rpobav45	qc2bav45

4. av23: is similarly defined, for the rear wall

There is a *av23 for every site, where A*≡ is one of the prefixes listed in Appendix A, corresponding to the specific site.

lanbav23	lbibav23	linbav23	lopav23	lpobav23	qc1bav23
ranbav23	rbibav23	rinbav23	ropav23	rpobav23	qc2bav23

5. av25: arterial diameter is similarly defined, as the mean of all available 2-5 distances

There is a *av25 for every site, where A*≡ is one of the prefixes listed in Appendix A, corresponding to the specific site.

lanbav25	lbibav25	linbav25	lopav25	lpobav25	qc1bav25
ranbav25	rbibav25	rinbav25	ropav25	rpobav25	qc2bav25

6. mn34: minimum lumen diameter, is the minimum of all available (up to eleven) distances between pairs of points on the 3-4 interfaces, using splined data when five or more points were actually read in an interface, or using only observed data when four or less points were read.

There is a *mn34 for every site, where A*≡ is one of the prefixes listed in Appendix A, corresponding to the specific site.

lanbmn34	lbibmn34	linbmn34	lopbn34	lpobmn34	qc1bmn34
ranbmn34	rbibmn34	rinbmn34	ropbn34	rpobmn34	qc2bmn34

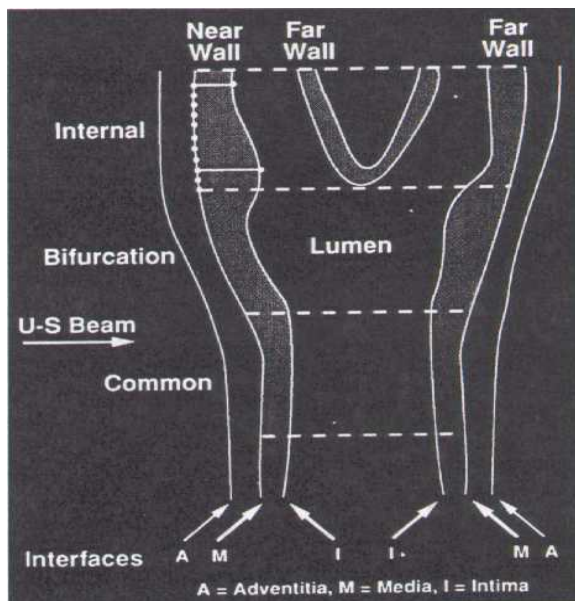
7. DEPTH21 is the overall average depth in pixels
8. DEPTH22 is the overall average depth in millimeters
9. QC21 is the site name of the first repeat site scanned
10. QC22 is the site name of the second repeat site scanned
11. QCCNT2 is the number of QC sites with repeated scans

Cohort, Exam 2**Appendix A**

B-Mode Derived Variable Site Prefixes

LAN	Left Common Carotid: Anterior Angle
RAN	Right Common Carotid: Anterior Angle
LBI	Left Bifurcation
RBI	Right Bifurcation
LIN	Left Internal Carotid
RIN	Right Internal Carotid
LOP	Left Common Carotid: Optimal Angle
ROP	Right Common Carotid: Optimal Angle
LPO	Left Common Carotid: Posterior Angle
RPO	Right Common Carotid: Posterior Angle
LPP	Left Popliteal
RPP	Right Popliteal
QC1	First QC Repeat Scan (refer to QC01 for site identification)
QC2	Second QC Repeat Scan (refer to QC02 for site identification)

Schematic Overview of Carotid Artery B-Mode Ultrasound Measurements



Interfaces:	1-	Boundary between the periadventitia and adventitia of the near wall (not measured)
	2-	Boundary between the adventitia and media of the near wall
	3-	Boundary between the intima of the near wall and the blood
	4-	Boundary between blood and intima of the far wall
	5-	Boundary between media and adventitia of the far wall
	6-	Boundary between adventitia and periadventitia of the far wall (not measured)

Max 23 = B-A; Max 45 = D-C; Min 34 = H-G

The extracranial carotid system is divided into one-centimeter segments: I = internal carotid; II = carotid bifurcation; III = common carotid. A maximum of eleven measurements is made by URC readers on each arterial wall interface, in each arterial segment. These measurements are placed equidistant at 1 millimeter intervals, represented by the eleven points placed on interface B2 on the internal carotid. Also shown on this schematic is the definition of a maximum and a minimum wall thickness variable.

Cohort, Exam 2**Ultrasound data**

Observed

<i>CENTER</i>		<i>Aric Field Center (Cir)</i>
<i>N</i>	<i>Value</i>	<i>Description</i>
3665	F	Forsyth County, NC
2885	J	Jackson City, MS
3784	M	Minneapolis Townships, MN
3662	W	Washington County, MD

<i>DEPTH21</i>		<i>Overall Average Depth Variable In Pixels</i>
<i>N</i>	<i>Value</i>	<i>Description</i>
13981	Range	156.4636 - 509 (median=353.3932 mean=353.46556 std=56.41822)
15		Missing

<i>DEPTH22</i>		<i>Overall Average Depth Variable In Mm</i>
<i>N</i>	<i>Value</i>	<i>Description</i>
13981	Range	10.48306 - 34.103 (median=23.67734 mean=23.682192 std=3.780021)
15		Missing

<i>ID</i>		<i>Aric Subject ID (Cir)</i>
<i>N</i>	<i>Value</i>	<i>Description</i>
13996	Present	Text suppressed

<i>LANBAV23</i>		<i>Average Near Wall Width (Left Common Carotid: Anterior Angle)</i>
<i>N</i>	<i>Value</i>	<i>Description</i>
7854	Range	0.134 - 2.89775 (median=0.684889 mean=0.7069947 std=0.1973280)
6142		Missing

<i>LANBAV25</i>		<i>Average Artery Diameter (Left Common Carotid: Anterior Angle)</i>
<i>N</i>	<i>Value</i>	<i>Description</i>
12119	Range	3.9329 - 13.09545 (median=7.625818 mean=7.7362884 std=0.9111071)
1877		Missing

Cohort, Exam 2

<i>LANBAV45</i>		<i>Average Far Wall Width (Left Common Carotid: Anterior Angle)</i>
<i>N</i>	<i>Value</i>	<i>Description</i>
10750	Range	0.201 - 3.082 (median=0.651727 mean=0.6707445 std=0.1787303)
3246		Missing

<i>LANBDEEP</i>		<i>Depth Variable (Left Common Carotid: Anterior Angle)</i>
<i>N</i>	<i>Value</i>	<i>Description</i>
12392	Range	109.9091 - 510 (median=311.101 mean=315.4466 std=73.5629)
1604		Missing

<i>LANBMN34</i>		<i>Minimum Lumen Diameter (Left Common Carotid: Anterior Angle)</i>
<i>N</i>	<i>Value</i>	<i>Description</i>
7269	Range	2.747 - 11.189 (median=6.164 mean=6.2259 std=0.7987)
6727		Missing

<i>LANBMX23</i>		<i>Maximum Near Wall Width (Left Common Carotid: Anterior Angle)</i>
<i>N</i>	<i>Value</i>	<i>Description</i>
7854	Range	0.201 - 3.149 (median=0.804 mean=0.8070 std=0.2230)
6142		Missing

<i>LANBMX45</i>		<i>Maximum Far Wall Width (Left Common Carotid: Anterior Angle)</i>
<i>N</i>	<i>Value</i>	<i>Description</i>
10750	Range	0.201 - 4.623 (median=0.737 mean=0.7858 std=0.2266)
3246		Missing

<i>LBFBAV45</i>		<i>Average Far Wall Width (Left Bifurcation Focus-Far Wall)</i>
<i>N</i>	<i>Value</i>	<i>Description</i>
11180	Range	0.209375 - 6.0635 (median=0.765714 mean=0.8484665 std=0.3636011)
2816		Missing

<i>LFBFDEEP</i>		<i>Depth Variable (Left Bifurcation Focus-Far Wall)</i>
<i>N</i>	<i>Value</i>	<i>Description</i>
13140	Range	133.7273 - 510.6667 (median=350.5778 mean=351.21424 std=64.95246)
856		Missing

Cohort, Exam 2

<i>LBFBMX45</i>		<i>Maximum Far Wall Width (Left Bifurcation Focus-Far Wall)</i>
<i>N</i>	<i>Value</i>	<i>Description</i>
11180	Range	0.268 - 6.365 (median=0.938 mean=1.0607 std=0.5062)
2816		Missing

<i>LBIBAV23</i>		<i>Average Near Wall Width (Left Bifurcation)</i>
<i>N</i>	<i>Value</i>	<i>Description</i>
6962	Range	0.111667 - 5.092 (median=0.804 mean=0.9295 std=0.4346)
7034		Missing

<i>LBIBAV25</i>		<i>Average Artery Diameter (Left Bifurcation)</i>
<i>N</i>	<i>Value</i>	<i>Description</i>
11842	Range	4.7838 - 18.7935 (median=9.1254 mean=9.37917 std=1.63325)
2154		Missing

<i>LBIBAV45</i>		<i>Average Far Wall Width (Left Bifurcation)</i>
<i>N</i>	<i>Value</i>	<i>Description</i>
9553	Range	0.210571 - 7.035 (median=0.751889 mean=0.8441946 std=0.3836897)
4443		Missing

<i>LBIBDEEP</i>		<i>Depth Variable (Left Bifurcation)</i>
<i>N</i>	<i>Value</i>	<i>Description</i>
12906	Range	157.9 - 510.5 (median=363.8091 mean=362.48155 std=62.97262)
1090		Missing

<i>LBIBM34</i>		<i>Minimum Lumen Diameter (Left Bifurcation)</i>
<i>N</i>	<i>Value</i>	<i>Description</i>
5325	Range	0.469 - 15.075 (median=6.499 mean=6.7961 std=1.4120)
8671		Missing

<i>LBIBMX23</i>		<i>Maximum Near Wall Width (Left Bifurcation)</i>
<i>N</i>	<i>Value</i>	<i>Description</i>
6962	Range	0.201 - 5.762 (median=0.938 mean=1.1241 std=0.5647)
7034		Missing

Cohort, Exam 2

<i>LBIBMX45</i>		<i>Maximum Far Wall Width (Left Bifurcation)</i>
<i>N</i>	<i>Value</i>	<i>Description</i>
9553	Range	0.268 - 8.308 (median=0.938 mean=1.0503 std=0.5285)
4443		Missing

<i>LBNBAV23</i>		<i>Average Near Wall Width (Left Bifurcation Focus-Near Wall)</i>
<i>N</i>	<i>Value</i>	<i>Description</i>
9393	Range	0.1675 - 4.3148 (median=0.797909 mean=0.8924744 std=0.4013780)
4603		Missing

<i>LBNBMX23</i>		<i>Maximum Near Wall Width (Left Bifurcation Focus-Near Wall)</i>
<i>N</i>	<i>Value</i>	<i>Description</i>
9393	Range	0.201 - 6.633 (median=0.938 mean=1.0874 std=0.5321)
4603		Missing

<i>LINBAV23</i>		<i>Average Near Wall Width (Left Internal Carotid)</i>
<i>N</i>	<i>Value</i>	<i>Description</i>
4714	Range	0.201 - 4.69 (median=0.68675 mean=0.781362 std=0.394244)
9282		Missing

<i>LINBAV25</i>		<i>Average Artery Diameter (Left Internal Carotid)</i>
<i>N</i>	<i>Value</i>	<i>Description</i>
10544	Range	3.037333 - 13.0985 (median=7.914973 mean=7.9835789 std=1.2101222)
3452		Missing

<i>LINBAV45</i>		<i>Average Far Wall Width (Left Internal Carotid)</i>
<i>N</i>	<i>Value</i>	<i>Description</i>
8081	Range	0.201 - 6.242167 (median=0.603 mean=0.6777 std=0.3629)
5915		Missing

<i>LINBDEEP</i>		<i>Depth Variable (Left Internal Carotid)</i>
<i>N</i>	<i>Value</i>	<i>Description</i>
12688	Range	112.5 - 510 (median=330 mean=332.6 std=65.8)
1308		Missing

Cohort, Exam 2

<i>LINBMN34</i>		<i>Minimum Lumen Diameter (Left Internal Carotid)</i>
<i>N</i>	<i>Value</i>	<i>Description</i>
3157	Range	0.67 - 11.457 (median=6.566 mean=6.5640 std=1.3445)
10839		Missing

<i>LINBMX23</i>		<i>Maximum Near Wall Width (Left Internal Carotid)</i>
<i>N</i>	<i>Value</i>	<i>Description</i>
4714	Range	0.201 - 6.767 (median=0.804 mean=0.9103 std=0.4932)
9282		Missing

<i>LINBMX45</i>		<i>Maximum Far Wall Width (Left Internal Carotid)</i>
<i>N</i>	<i>Value</i>	<i>Description</i>
8081	Range	0.201 - 7.37 (median=0.737 mean=0.8198 std=0.4612)
5915		Missing

<i>LOPBAV23</i>		<i>Average Near Wall Width (Left Common Carotid: Optimal Angle)</i>
<i>N</i>	<i>Value</i>	<i>Description</i>
10173	Range	0.223333 - 2.9815 (median=0.67 mean=0.695 std=0.202)
3823		Missing

<i>LOPBAV25</i>		<i>Average Artery Diameter (Left Common Carotid: Optimal Angle)</i>
<i>N</i>	<i>Value</i>	<i>Description</i>
13271	Range	3.508364 - 13.43045 (median=7.577091 mean=7.6977318 std=0.9359292)
725		Missing

<i>LOPBAV45</i>		<i>Average Far Wall Width (Left Common Carotid: Optimal Angle)</i>
<i>N</i>	<i>Value</i>	<i>Description</i>
12122	Range	0.1675 - 3.3165 (median=0.639545 mean=0.6658416 std=0.1871332)
1874		Missing

<i>LOPBDEEP</i>		<i>Depth Variable (Left Common Carotid: Optimal Angle)</i>
<i>N</i>	<i>Value</i>	<i>Description</i>
13471	Range	117 - 509.75 (median=345.1818 mean=346.70812 std=64.53773)
525		Missing

Cohort, Exam 2

<i>LOPBMN34</i>		<i>Minimum Lumen Diameter (Left Common Carotid: Optimal Angle)</i>
<i>N</i>	<i>Value</i>	<i>Description</i>
9583	Range	1.876 - 11.591 (median=6.097 mean=6.1697 std=0.8171)
4413		Missing

<i>LOPBMX23</i>		<i>Maximum Near Wall Width (Left Common Carotid: Optimal Angle)</i>
<i>N</i>	<i>Value</i>	<i>Description</i>
10173	Range	0.268 - 3.149 (median=0.804 mean=0.8148 std=0.2445)
3823		Missing

<i>LOPBMX45</i>		<i>Maximum Far Wall Width (Left Common Carotid: Optimal Angle)</i>
<i>N</i>	<i>Value</i>	<i>Description</i>
12122	Range	0.201 - 4.623 (median=0.737 mean=0.7943 std=0.2480)
1874		Missing

<i>LPOBAV23</i>		<i>Average Near Wall Width (Left Common Carotid: Posterior Angle)</i>
<i>N</i>	<i>Value</i>	<i>Description</i>
8524	Range	0.178667 - 3.015 (median=0.651727 mean=0.6745102 std=0.1927712)
5472		Missing

<i>LPOBAV25</i>		<i>Average Artery Diameter (Left Common Carotid: Posterior Angle)</i>
<i>N</i>	<i>Value</i>	<i>Description</i>
11461	Range	3.9865 - 13.07718 (median=7.532714 mean=7.6486036 std=0.9406960)
2535		Missing

<i>LPOBAV45</i>		<i>Average Far Wall Width (Left Common Carotid: Posterior Angle)</i>
<i>N</i>	<i>Value</i>	<i>Description</i>
9995	Range	0.18425 - 3.149 (median=0.6432 mean=0.66777 std=0.18811)
4001		Missing

<i>LPOBDEEP</i>		<i>Depth Variable (Left Common Carotid: Posterior Angle)</i>
<i>N</i>	<i>Value</i>	<i>Description</i>
11695	Range	149.5 - 511 (median=354.7273 mean=356.34828 std=64.65412)
2301		Missing

Cohort, Exam 2

<i>LPOBMN34</i>		<i>Minimum Lumen Diameter (Left Common Carotid: Posterior Angle)</i>
<i>N</i>	<i>Value</i>	<i>Description</i>
7843	Range	2.546 - 11.256 (median=6.03 mean=6.145 std=0.813)
6153		Missing

<i>LPOBMX23</i>		<i>Maximum Near Wall Width (Left Common Carotid: Posterior Angle)</i>
<i>N</i>	<i>Value</i>	<i>Description</i>
8524	Range	0.201 - 3.015 (median=0.737 mean=0.7871 std=0.2335)
5472		Missing

<i>LPOBMX45</i>		<i>Maximum Far Wall Width (Left Common Carotid: Posterior Angle)</i>
<i>N</i>	<i>Value</i>	<i>Description</i>
9995	Range	0.268 - 3.819 (median=0.737 mean=0.7929 std=0.2432)
4001		Missing

<i>QC1BAV23</i>		<i>Average Near Wall Width (First QC Repeat Scan)</i>
<i>N</i>	<i>Value</i>	<i>Description</i>
5691	Range	0.201 - 4.69 (median=0.7236 mean=0.80584 std=0.35006)
8305		Missing

<i>QC1BAV25</i>		<i>Average Artery Diameter (First QC Repeat Scan)</i>
<i>N</i>	<i>Value</i>	<i>Description</i>
6001	Range	3.704143 - 17.34082 (median=8.084667 mean=8.2913066 std=1.4467915)
7995		Missing

<i>QC1BAV45</i>		<i>Average Far Wall Width (First QC Repeat Scan)</i>
<i>N</i>	<i>Value</i>	<i>Description</i>
7402	Range	0.201 - 6.432 (median=0.700455 mean=0.7806740 std=0.3626607)
6594		Missing

<i>QC1BMN34</i>		<i>Minimum Lumen Diameter (First QC Repeat Scan)</i>
<i>N</i>	<i>Value</i>	<i>Description</i>
2899	Range	1.072 - 13.4 (median=6.365 mean=6.4907 std=1.1737)
11097		Missing

Cohort, Exam 2

QC1BMX23		Maximum Near Wall Width (First QC Repeat Scan)
N	Value	Description
5691	Range	0.201 - 4.891 (median=0.871 mean=0.9610 std=0.4567)
8305		Missing

QC1BMX45		Maximum Far Wall Width (First QC Repeat Scan)
N	Value	Description
7402	Range	0.268 - 7.236 (median=0.804 mean=0.9634 std=0.5031)
6594		Missing

QC21		Site Name Of QC Repeat Scan 01
N	Value	Description
506	LANT	Left common carotid: anterior angle
1286	LBFW	Left bifurcation focus-Far Wall
1029	LBIF	Left bifurcation
1511	LBNW	Left bifurcation focus-Near Wall
1449	LINT	Left internal carotid
305	LOPT	Left common carotid: optimal angle
349	LPOS	Left common carotid: posterior angle
357	RANT	Right common carotid: anterior angle
1432	RBFW	Right bifurcation focus-Far Wall
1061	RBIF	Right bifurcation
1503	RBNW	Right bifurcation focus-Near Wall
1252	RINT	Right internal carotid
440	ROPT	Right common carotid: optimal angle
343	RPOS	Right common carotid: posterior angle
1173		Missing

Cohort, Exam 2

QC22		Site Name Of QC Repeat Scan 02
N	Value	Description
5	LBFW	Left bifurcation Focus-Far Wall
3	LBIF	Left bifurcation
6	LBNW	Left bifurcation focus-Near Wall
8	LINT	Left internal carotid
15	RANT	Right common carotid: anterior angle
10	RBFW	Right bifurcation focus-Far Wall
14	RBIF	Right bifurcation
21	RBNW	Right bifurcation focus-Near Wall
16	RINT	Right internal carotid
28	ROPT	Right common carotid: optimal angle
9	RPOS	Right common carotid: posterior angle
13861		Missing

QC2BAV23		Average Near Wall Width (QC Scan 02)
N	Value	Description
74	Range	0.35175 - 2.765273 (median=0.694194 mean=0.7576165 std=0.3437291)
13922		Missing

QC2BAV25		Average Artery Diameter (QC Scan 02)
N	Value	Description
80	Range	5.938636 - 11.39838 (median=7.918182 mean=8.0720403 std=1.1422240)
13916		Missing

QC2BAV45		Average Far Wall Width (QC Scan 02)
N	Value	Description
84	Range	0.245667 - 2.400833 (median=0.644114 mean=0.6940551 std=0.2724558)
13912		Missing

QC2BMN34		Minimum Lumen Diameter (QC Scan 02)
N	Value	Description
50	Range	4.288 - 9.581 (median=6.432 mean=6.4508 std=1.0681)
13946		Missing

Cohort, Exam 2

QC2BMX23		Maximum Near Wall Width (QC Scan 02)
N	Value	Description
74	Range	0.469 - 3.618 (median=0.804 mean=0.9072 std=0.4554)
13922		Missing

QC2BMX45		Maximum Far Wall Width (QC Scan 02)
N	Value	Description
84	Range	0.268 - 2.68 (median=0.804 mean=0.8319 std=0.3333)
13912		Missing

QCCNT2		Number Of QC Repeat Scans
N	Value	Description
1172	0	
12690	1	
134	2	

RANBAV23		Average Near Wall Width (Right Common Carotid: Anterior Angle)
N	Value	Description
7596	Range	0.1675 - 2.814 (median=0.682182 mean=0.7064214 std=0.2080567)
6400		Missing

RANBAV25		Average Artery Diameter (Right Common Carotid: Anterior Angle)
N	Value	Description
12095	Range	4.744818 - 12.97567 (median=7.717182 mean=7.8248337 std=0.9443638)
1901		Missing

RANBAV45		Average Far Wall Width (Right Common Carotid: Anterior Angle)
N	Value	Description
10366	Range	0.201 - 5.3935 (median=0.647667 mean=0.6665759 std=0.1777170)
3630		Missing

RANBDEEP		Depth Variable(Right Common Carotid: Anterior Angle)
N	Value	Description
12348	Range	103.6364 - 510 (median=324 mean=327.1 std=73.8)
1648		Missing

Cohort, Exam 2

<i>RANBMN34</i>		<i>Minimum Lumen Diameter (Right Common Carotid: Anterior Angle)</i>
<i>N</i>	<i>Value</i>	<i>Description</i>
6857	Range	3.082 - 11.323 (median=6.231 mean=6.3165 std=0.8404)
7139		Missing

<i>RANBMX23</i>		<i>Maximum Near Wall Width (Right Common Carotid: Anterior Angle)</i>
<i>N</i>	<i>Value</i>	<i>Description</i>
7596	Range	0.201 - 3.417 (median=0.804 mean=0.8077 std=0.2334)
6400		Missing

<i>RANBMX45</i>		<i>Maximum Far Wall Width (Right Common Carotid: Anterior Angle)</i>
<i>N</i>	<i>Value</i>	<i>Description</i>
10366	Range	0.268 - 5.427 (median=0.737 mean=0.7841 std=0.2225)
3630		Missing

<i>RBFBV45</i>		<i>Average Far Wall Width (Right Bifurcation Focus-Far Wal L)</i>
<i>N</i>	<i>Value</i>	<i>Description</i>
11311	Range	0.201 - 5.468875 (median=0.784857 mean=0.8940860 std=0.4230882)
2685		Missing

<i>RBFBDEEP</i>		<i>Depth Variable(Right Bifurcation Focus-Far Wal L)</i>
<i>N</i>	<i>Value</i>	<i>Description</i>
13264	Range	128.8 - 511 (median=355.101 mean=354.2864 std=67.1308)
732		Missing

<i>RBFBMX45</i>		<i>Maximum Far Wall Width (Right Bifurcation Focus-Far Wal L)</i>
<i>N</i>	<i>Value</i>	<i>Description</i>
11311	Range	0.201 - 6.901 (median=0.938 mean=1.1429 std=0.6118)
2685		Missing

<i>RBIBAV23</i>		<i>Average Near Wall Width (Right Bifurcation)</i>
<i>N</i>	<i>Value</i>	<i>Description</i>
7061	Range	0.210571 - 5.2595 (median=0.767455 mean=0.8540173 std=0.3740692)
6935		Missing

Cohort, Exam 2

<i>RBIBAV25</i>		<i>Average Artery Diameter (Right Bifurcation)</i>
<i>N</i>	<i>Value</i>	<i>Description</i>
12193	Range	5.494 - 18.894 (median=9.179 mean=9.3785 std=1.5066)
1803		Missing

<i>RBIBAV45</i>		<i>Average Far Wall Width (Right Bifurcation)</i>
<i>N</i>	<i>Value</i>	<i>Description</i>
9899	Range	0.201 - 7.682667 (median=0.781667 mean=0.8926745 std=0.4317365)
4097		Missing

<i>RBIBDEEP</i>		<i>Depth Variable (Right Bifurcation)</i>
<i>N</i>	<i>Value</i>	<i>Description</i>
13114	Range	115.5556 - 511 (median=363.6667 mean=362.08342 std=64.19025)
882		Missing

<i>RBIBM34</i>		<i>Minimum Lumen Diameter (Right Bifurcation)</i>
<i>N</i>	<i>Value</i>	<i>Description</i>
5561	Range	0.938 - 16.884 (median=6.633 mean=6.8873 std=1.4184)
8435		Missing

<i>RBIBM23</i>		<i>Maximum Near Wall Width (Right Bifurcation)</i>
<i>N</i>	<i>Value</i>	<i>Description</i>
7061	Range	0.268 - 5.494 (median=0.871 mean=1.0292 std=0.4844)
6935		Missing

<i>RBIBM45</i>		<i>Maximum Far Wall Width (Right Bifurcation)</i>
<i>N</i>	<i>Value</i>	<i>Description</i>
9899	Range	0.201 - 8.308 (median=0.938 mean=1.1374 std=0.6168)
4097		Missing

<i>RBNBAV23</i>		<i>Average Near Wall Width (Right Bifurcation Focus-Nearwall)</i>
<i>N</i>	<i>Value</i>	<i>Description</i>
9442	Range	0.178667 - 4.556 (median=0.75375 mean=0.836161 std=0.348633)
4554		Missing

Cohort, Exam 2

<i>RBNBMX23</i>		<i>Maximum Near Wall Width (Right Bifurcation Focus-Nearwall)</i>
<i>N</i>	<i>Value</i>	<i>Description</i>
9442	Range	0.201 - 5.494 (median=0.871 mean=1.0107 std=0.4520)
4554		Missing

<i>RINBAV23</i>		<i>Average Near Wall Width (Right Internal Carotid)</i>
<i>N</i>	<i>Value</i>	<i>Description</i>
3605	Range	0.201 - 4.115714 (median=0.67 mean=0.749 std=0.375)
10391		Missing

<i>RINBAV25</i>		<i>Average Artery Diameter (Right Internal Carotid)</i>
<i>N</i>	<i>Value</i>	<i>Description</i>
10005	Range	3.80225 - 14.36033 (median=7.819857 mean=7.8632210 std=1.2427547)
3991		Missing

<i>RINBAV45</i>		<i>Average Far Wall Width (Right Internal Carotid)</i>
<i>N</i>	<i>Value</i>	<i>Description</i>
8054	Range	0.1876 - 7.571 (median=0.640222 mean=0.7486234 std=0.4466506)
5942		Missing

<i>RINBDEEP</i>		<i>Depth Variable (Right Internal Carotid)</i>
<i>N</i>	<i>Value</i>	<i>Description</i>
12331	Range	105.7778 - 511 (median=351.5 mean=353.13 std=68.05)
1665		Missing

<i>RINBMN34</i>		<i>Minimum Lumen Diameter (Right Internal Carotid)</i>
<i>N</i>	<i>Value</i>	<i>Description</i>
2593	Range	1.005 - 11.39 (median=6.499 mean=6.4137 std=1.4382)
11403		Missing

<i>RINBMX23</i>		<i>Maximum Near Wall Width (Right Internal Carotid)</i>
<i>N</i>	<i>Value</i>	<i>Description</i>
3605	Range	0.201 - 5.159 (median=0.737 mean=0.8689 std=0.4582)
10391		Missing

Cohort, Exam 2

<i>RINBMX45</i>		<i>Maximum Far Wall Width (Right Internal Carotid)</i>
<i>N</i>	<i>Value</i>	<i>Description</i>
8054	Range	0.201 - 7.906 (median=0.737 mean=0.9122 std=0.5594)
5942		Missing

<i>ROPBAV23</i>		<i>Average Near Wall Width (Right Common Carotid: Anterior Angle)</i>
<i>N</i>	<i>Value</i>	<i>Description</i>
10426	Range	0.158364 - 2.814 (median=0.67 mean=0.693 std=0.204)
3570		Missing

<i>ROPBAV25</i>		<i>Average Artery Diameter (Right Common Carotid: Anterior Angle)</i>
<i>N</i>	<i>Value</i>	<i>Description</i>
13427	Range	4.988455 - 13.24164 (median=7.6648 mean=7.77770 std=0.95937)
569		Missing

<i>ROPBAV45</i>		<i>Average Far Wall Width (Right Common Carotid: Anterior Angle)</i>
<i>N</i>	<i>Value</i>	<i>Description</i>
12515	Range	0.156333 - 3.0619 (median=0.6432 mean=0.66902 std=0.17859)
1481		Missing

<i>ROPBDEEP</i>		<i>Depth Variable(Right Common Carotid: Anterior Angle)</i>
<i>N</i>	<i>Value</i>	<i>Description</i>
13566	Range	105.7 - 511 (median=349.7 mean=350.36 std=66.88)
430		Missing

<i>ROPBMN34</i>		<i>Minimum Lumen Diameter (Right Common Carotid: Anterior Angle)</i>
<i>N</i>	<i>Value</i>	<i>Description</i>
9920	Range	1.541 - 11.189 (median=6.164 mean=6.2586 std=0.8307)
4076		Missing

<i>ROPBMX23</i>		<i>Maximum Near Wall Width (Right Common Carotid: Anterior Angle)</i>
<i>N</i>	<i>Value</i>	<i>Description</i>
10426	Range	0.201 - 3.551 (median=0.804 mean=0.8103 std=0.2431)
3570		Missing

Cohort, Exam 2

<i>ROPBMX45</i>		<i>Maximum Far Wall Width (Right Common Carotid: Anterior Angle)</i>
<i>N</i>	<i>Value</i>	<i>Description</i>
12515	Range	0.201 - 4.02 (median=0.737 mean=0.8068 std=0.2446)
1481		Missing

<i>RPOBAV23</i>		<i>Average Near Wall Width (Right Common Carotid: Posterior Angle)</i>
<i>N</i>	<i>Value</i>	<i>Description</i>
9601	Range	0.1675 - 3.082 (median=0.647667 mean=0.6713787 std=0.1949470)
4395		Missing

<i>RPOBAV25</i>		<i>Average Artery Diameter (Right Common Carotid: Posterior Angle)</i>
<i>N</i>	<i>Value</i>	<i>Description</i>
11904	Range	4.496444 - 12.80817 (median=7.595364 mean=7.7102201 std=0.9510510)
2092		Missing

<i>RPOBAV45</i>		<i>Average Far Wall Width (Right Common Carotid: Posterior Angle)</i>
<i>N</i>	<i>Value</i>	<i>Description</i>
10949	Range	0.2345 - 3.096889 (median=0.645636 mean=0.6716798 std=0.1828258)
3047		Missing

<i>RPOBDEEP</i>		<i>Depth Variable (Right Common Carotid: Posterior Angle)</i>
<i>N</i>	<i>Value</i>	<i>Description</i>
12035	Range	112 - 511 (median=362.25 mean=363.340 std=65.422)
1961		Missing

<i>RPOBMN34</i>		<i>Minimum Lumen Diameter (Right Common Carotid: Posterior Angle)</i>
<i>N</i>	<i>Value</i>	<i>Description</i>
9036	Range	2.546 - 10.921 (median=6.164 mean=6.2266 std=0.8221)
4960		Missing

<i>RPOBMX23</i>		<i>Maximum Near Wall Width (Right Common Carotid: Posterior Angle)</i>
<i>N</i>	<i>Value</i>	<i>Description</i>
9601	Range	0.201 - 3.484 (median=0.737 mean=0.7846 std=0.2338)
4395		Missing

Cohort, Exam 2

<i>RPOBMX45</i>		<i>Maximum Far Wall Width (Right Common Carotid: Posterior Angle)</i>
<i>N</i>	<i>Value</i>	<i>Description</i>
10949	Range	0.268 - 5.36 (median=0.737 mean=0.8047 std=0.2424)
3047		Missing