

**Cohort, Exam 3**Ultrasound Data  
Reader Trend Adjusted Derived Variables for Far Wall Thickness

Because of method drift over the visit and systematic differences between readers, an additional set of far wall thickness variables was derived to adjust for these problems. These are the Reader Trend Adjusted (RTA) variables for the far wall thickness (ie boundaries 4 and 5) as illustrated in the schematic in Appendix A. The following variables appear in the RTA data files.

| Variable Name | Description                          |
|---------------|--------------------------------------|
| id            | Aric subject id                      |
| lbicrt45      | Imputed RTA far wall thickness, LBIC |
| lbicwt45      | Weight for lbicrt45                  |
| lincrt45      | Imputed RTA far wall thickness, LINC |
| lincwt45      | Weight for lincrt45                  |
| lopqrt45      | Imputed RTA far wall thickness, LOPC |
| lopqwt45      | weight for lopqrt45                  |
| mnc45_1       | Mean of the *rt45 variables          |
| rbicrt45      | Imputed RTA far wall thickness, RBIC |
| rbicwt45      | Weight for rbicrt45 variables        |
| rincrt45      | Imputed RTA far wall thickness, RINC |
| rincwt45      | Weight for rincrt45 variables        |
| ropqrt45      | Imputed RTA far wall thickness, ROPC |
| ropqwt45      | Weight for ropqrt45                  |

## Data Set Names

The data sets containing these variables are: rtabf3x, rtabm3x, rtawf3x, and rtawm3x where rta indicates the variables are reader trend adjusted, the next two letters indicate the gender-race group, the 3 indicates it is a Visit 3 data set, and x is a placeholder for the version of the data set.

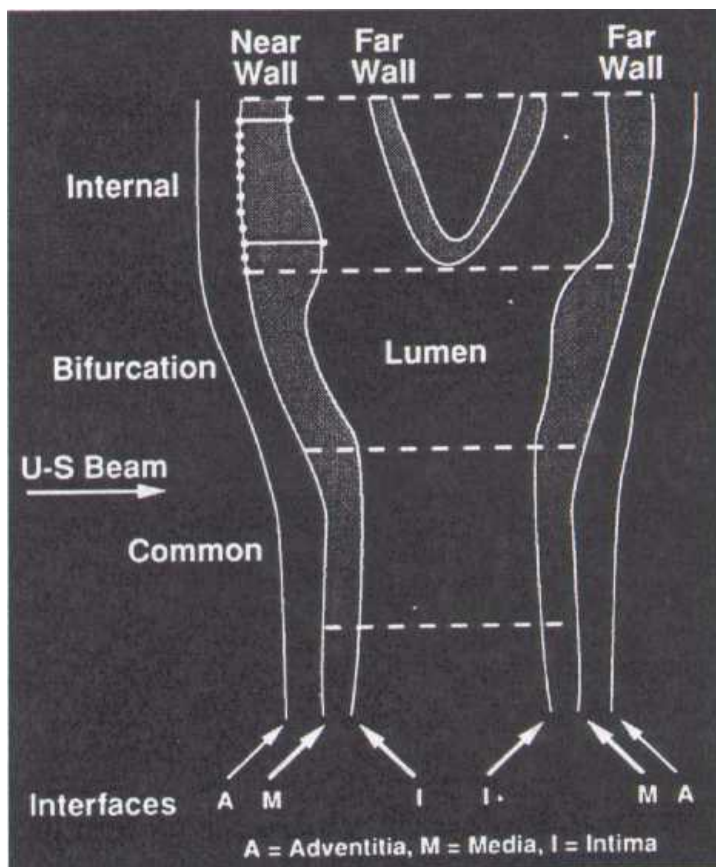
**Cohort, Exam 3**

## APPENDIX A

## B-Mode Derived Variable Site Prefixes

|      |   |
|------|---|
| LBI  | Left Bifurcation  |
| RBI  | Right Bifurcation   |
| LIN  | Left Internal Carotid   |
| RIN  | Right Internal Carotid  |
| LOP  | Left Common Carotid: Optimal Angle                            |
| ROP  | Right Common Carotid: Optimal Angle                           |
| QCC1 | First QC Repeat Scan (refer to QC01 for site identification)  |
| QCC2 | Second QC Repeat Scan (refer to QC02 for site identification) |

Schematic Overview of Carotid Artery B-Mode Ultrasound Measurements



## Interfaces:

- 1- Boundary between the periadventitia and adventitia of the near wall (not measured)
- 2- Boundary between the adventitia and media of the near wall
- 3- Boundary between the intima of the near wall and the blood
- 4- Boundary between blood and intima of the far wall
- 5- Boundary between media and adventitia of the far wall
- 6- Boundary between adventitia and periadventitia of the far wall (not measured)

Max 23 = B-A; Max 45 = D-C; Min 34 = H-G

The extracranial carotid system is divided into one-centimeter segments: I = internal carotid; II = carotid bifurcation; III = common carotid. A maximum of eleven measurements is made by URC readers on each arterial wall interface, in each arterial segment. These measurements are placed equidistant at 1 millimeter intervals, represented by the eleven points placed on interface B2 on the internal carotid. Also shown on this schematic is the definition of a maximum and a minimum wall thickness variable. Computational formulae for these variables are shown in this appendix.

**Cohort, Exam 3****Ultrasound data**

Reader trend adjusted derived variables for far wall thickness - black male

| <i>ID</i> |              | <i>Aric Subject ID (Cir)</i> |
|-----------|--------------|------------------------------|
| <i>N</i>  | <i>Value</i> | <i>Description</i>           |
| 946       | Present      | Text suppressed              |

| <i>LBICRT45</i> |              | <i>Imputed RTA far wall thickness, LBIC</i>                        |
|-----------------|--------------|--|
| <i>N</i>        | <i>Value</i> | <i>Description</i>   |
| 946             | Range        | 0.40082 - 4.64672 ( median=0.903928 mean=0.9796722 std=0.3958149 ) |

| <i>LBICWT45</i> |              | <i>Weight For LBICRT45</i> |
|-----------------|--------------|----------------------------|
| <i>N</i>        | <i>Value</i> | <i>Description</i>         |
| 67              | 0.1666666667 |                            |
| 109             | 0.3333333333 |                            |
| 109             | 0.5          |                            |
| 85              | 0.6666666667 |                            |
| 52              | 0.8333333333 |                            |
| 524             | 1            |                            |

| <i>LINCRT45</i> |              | <i>Imputed RTA far wall thickness, LINC</i>                         |
|-----------------|--------------|---|
| <i>N</i>        | <i>Value</i> | <i>Description</i>  |
| 946             | Range        | 0.253165 - 3.13812 ( median=0.662444 mean=0.6927030 std=0.2172851 ) |

| <i>LINCWT45</i> |              | <i>Weight For LINCRT45</i> |
|-----------------|--------------|----------------------------|
| <i>N</i>        | <i>Value</i> | <i>Description</i>         |
| 66              | 0.1666666667 |                            |
| 95              | 0.3333333333 |                            |
| 109             | 0.5          |                            |
| 91              | 0.6666666667 |                            |
| 44              | 0.8333333333 |                            |
| 541             | 1            |                            |

**Cohort, Exam 3**

| <i>LOPCRT45</i> |              | <i>Imputed RTA far wall thickness, LOPC</i>                         |
|-----------------|--------------|---|
| <i>N</i>        | <i>Value</i> | <i>Description</i>  |
| 946             | Range        | 0.328109 - 2.68795 ( median=0.749109 mean=0.7751756 std=0.1975562 ) |

| <i>LOPCWT45</i> |              | <i>Weight For LOPCRT45</i> |
|-----------------|--------------|----------------------------|
| <i>N</i>        | <i>Value</i> | <i>Description</i>         |
| 40              | 0.1666666667 |                            |
| 35              | 0.3333333333 |                            |
| 15              | 0.5          |                            |
| 7               | 0.6666666667 |                            |
| 3               | 0.8333333333 |                            |
| 846             | 1            |                            |

| <i>MNC45_1</i> |              | <i>Mean Of The RT45 Variables</i>                                   |
|----------------|--------------|---|
| <i>N</i>       | <i>Value</i> | <i>Description</i>  |
| 946            | Range        | 0.505143 - 2.41666 ( median=0.787624 mean=0.8325575 std=0.1938252 ) |

| <i>RBICRT45</i> |              | <i>Imputed RTA far wall thickness, RBIC</i>                         |
|-----------------|--------------|---|
| <i>N</i>        | <i>Value</i> | <i>Description</i>  |
| 946             | Range        | 0.344474 - 3.81104 ( median=0.941467 mean=1.0214136 std=0.4038502 ) |

| <i>RBICWT45</i> |              | <i>Weight For RBICRT45</i> |
|-----------------|--------------|----------------------------|
| <i>N</i>        | <i>Value</i> | <i>Description</i>         |
| 71              | 0.1666666667 |                            |
| 113             | 0.3333333333 |                            |
| 132             | 0.5          |                            |
| 89              | 0.6666666667 |                            |
| 38              | 0.8333333333 |                            |
| 503             | 1            |                            |

| <i>RINCRT45</i> |              | <i>Imputed RTA far wall thickness, RINC</i>                         |
|-----------------|--------------|---|
| <i>N</i>        | <i>Value</i> | <i>Description</i>  |
| 946             | Range        | 0.258356 - 4.53204 ( median=0.696917 mean=0.7431444 std=0.2824940 ) |

**Cohort, Exam 3**

| <i>RINCWT45</i> |              | <i>Weight For RINCRT45</i> |
|-----------------|--------------|----------------------------|
| <i>N</i>        | <i>Value</i> | <i>Description</i>         |
| 69              | 0.1666666667 |                            |
| 106             | 0.3333333333 |                            |
| 138             | 0.5          |                            |
| 106             | 0.6666666667 |                            |
| 68              | 0.8333333333 |                            |
| 459             | 1            |                            |

| <i>ROPCRT45</i> |              | <i>Imputed RTA for wall thickness, ROPC</i>                         |
|-----------------|--------------|---|
| <i>N</i>        | <i>Value</i> | <i>Description</i>  |
| 946             | Range        | 0.382131 - 2.49933 ( median=0.764271 mean=0.7832361 std=0.1943626 ) |

| <i>ROPCWT45</i> |              | <i>Weight For ROPCRT45</i> |
|-----------------|--------------|----------------------------|
| <i>N</i>        | <i>Value</i> | <i>Description</i>         |
| 47              | 0.1666666667 |                            |
| 34              | 0.3333333333 |                            |
| 22              | 0.5          |                            |
| 6               | 0.6666666667 |                            |
| 1               | 0.8333333333 |                            |
| 836             | 1            |                            |