

Thank you for participating in ARIC and the
ARIC-PYP Ancillary Study!

— — —

**ARIC-PYP aims to examine early
alterations in heart structure,
function and biomarkers associated
with transthyretin cardiac
amyloidosis, an important cause of
heart failure.**

— — —

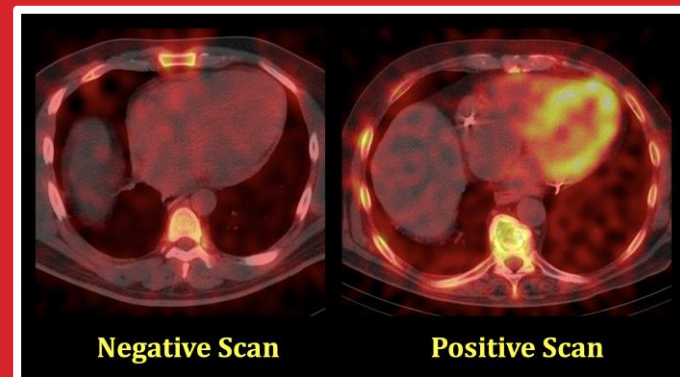
As part of ARIC-PYP, you may have the
opportunity to take part in a special heart scan.
This research study will help us understand what
changes happen in the hearts of people with
transthyretin cardiac amyloidosis and how these
changes are associated with heart failure. To do
this, we will be conducting a heart scan.



Is ARIC confidential?

Yes. All the information you give us is confidential
and will only be used for research purposes.
Information collected about you will not be
associated with your name.

ARIC™ Study HEART SCAN



ARIC™

Atherosclerosis Risk in Communities Study
Principal Investigator: Josef Coresh
IRB00311999

Purpose

The purpose of the ARIC-PYP research study is to examine early changes in heart structure, function and biomarkers associated with transthyretin cardiac amyloidosis, an important cause of heart failure.

How will we accomplish this?

Participants will be asked to complete a heart scan and fill a few questionnaires.

Heart Scan: Small amount of a radioactive tracer (technetium-99m-pyrophosphate, PYP, or oxydronate, HDP) will be injected into a vein in your arm. The heart scan is performed on a SPECT machine and will take approximately 30 minutes, though your total time at the imaging facility may be 3 hours.

What is a heart scan?

A heart scan is a photo of your heart using a special camera. You will need to lie flat within a tube for the photos to be taken. The process takes about 30 minutes.

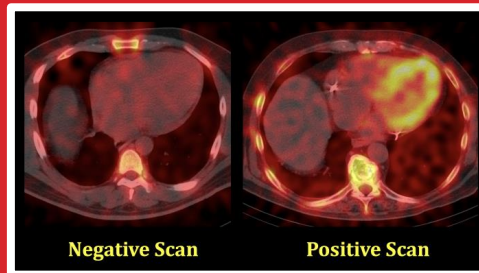


SPECT Machine

What is the use of this-heart scan?

A scan is an image of the heart that is obtained by injecting a small amount of FDA approved radioactive tracer into your arm.

This scan is used in the diagnosis of transthyretin cardiac amyloidosis.



PYP Scan Result

Why participate in the ARIC-PYP Study?

This heart scan may identify early transthyretin cardiac amyloidosis in your heart.

By combining this data with information we've collected from you over the past 30 years, this study might allow researchers to create new ways to screen for amyloidosis and allow for early treatment.

The information from this study will help us better understand how to diagnose transthyretin cardiac amyloidosis early.

Who is eligible?

Approximately 900 people across all four ARIC locations will participate in the heart imaging study.

This will include people with heart failure and other abnormal heart findings.

Some people are unable to get this heart scan. The ARIC staff will work with you to determine if you are eligible to take part in this study.



If I decide to participate, what are my next steps?

Similar to previous visits, all imaging studies will be discussed with you over the phone or in person.

You may be asked questions to help us determine if you are eligible for this study.

If you are eligible, we will schedule you for a heart scan, imaging appointments and questionnaires.

An ARIC staff member will accompany you for the duration of the appointment. The visit for the heart scan will take about 3 hours.

This imaging scan is separate from the regular ARIC clinic visits, and we still hope you will continue to participate in regular clinic visits.

We are happy to answer any questions!

For more
information call:
617-732-6290

ARIC-PYP Study
Brigham and Women's Hospital
75 Francis Street
Boston, MA 02115